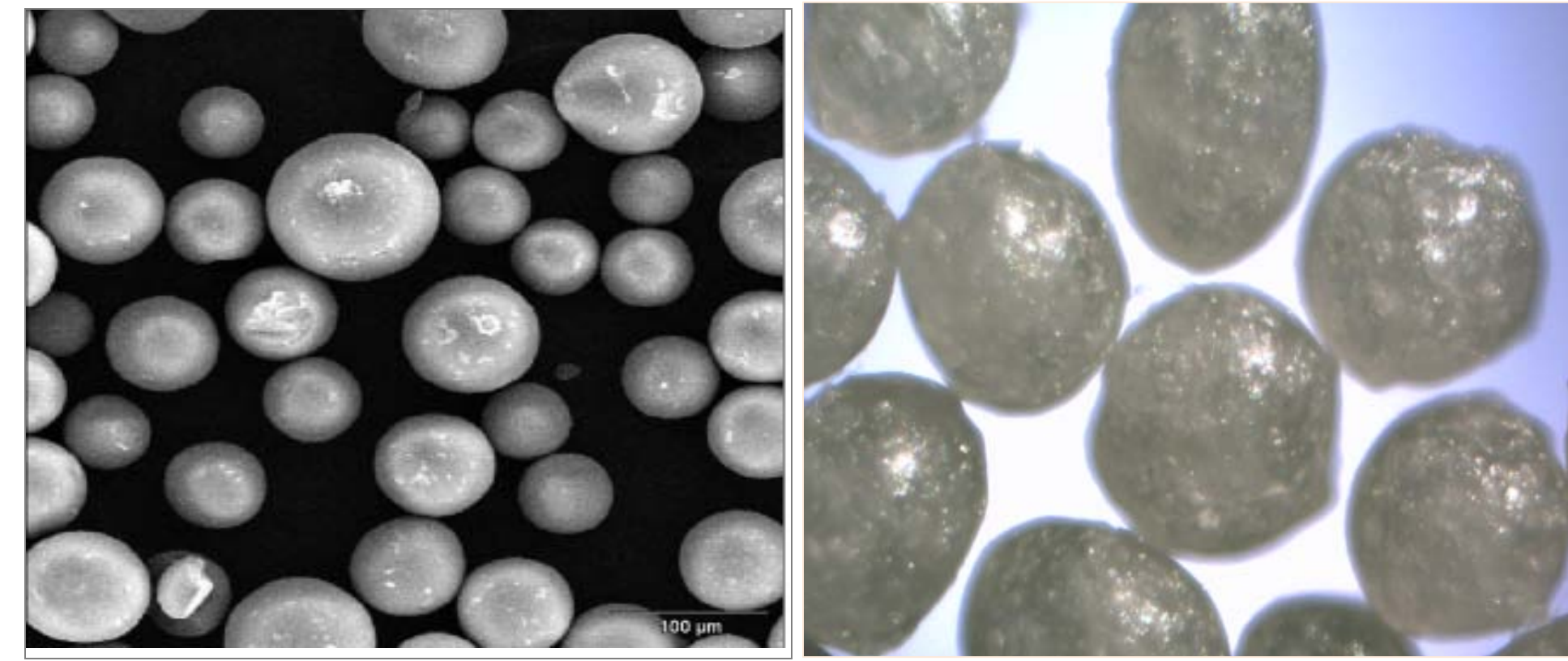


Measuring Our Success, Targeting Our Challenges

Geldart Group A

Geldart Group B

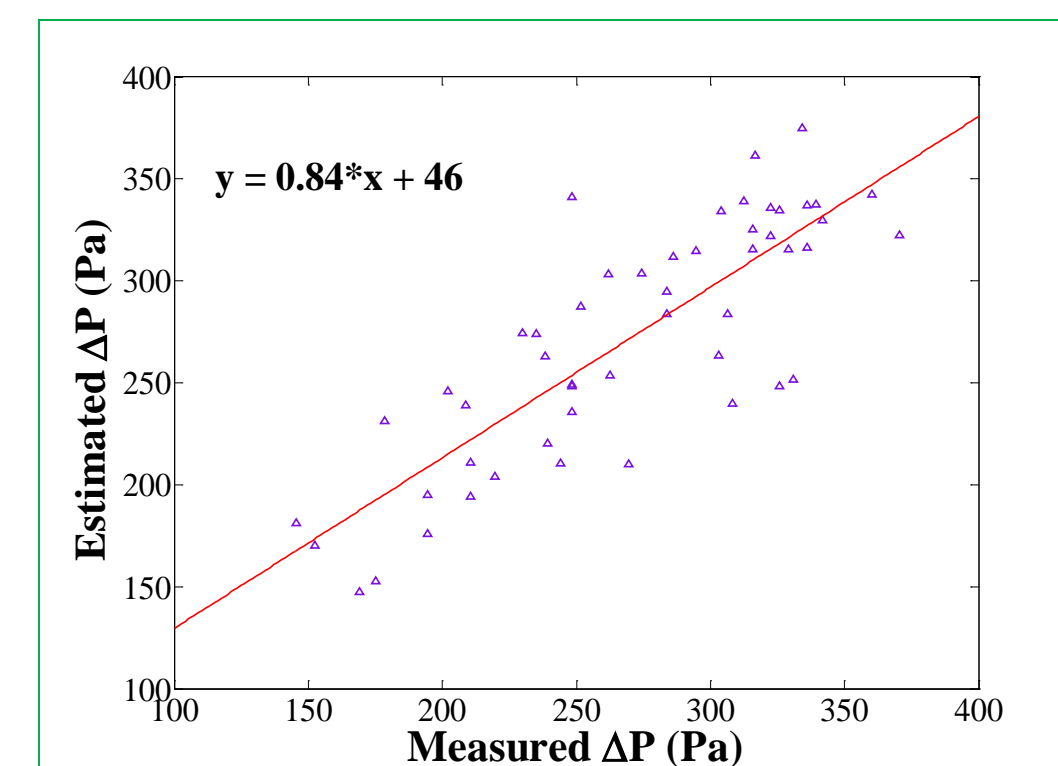
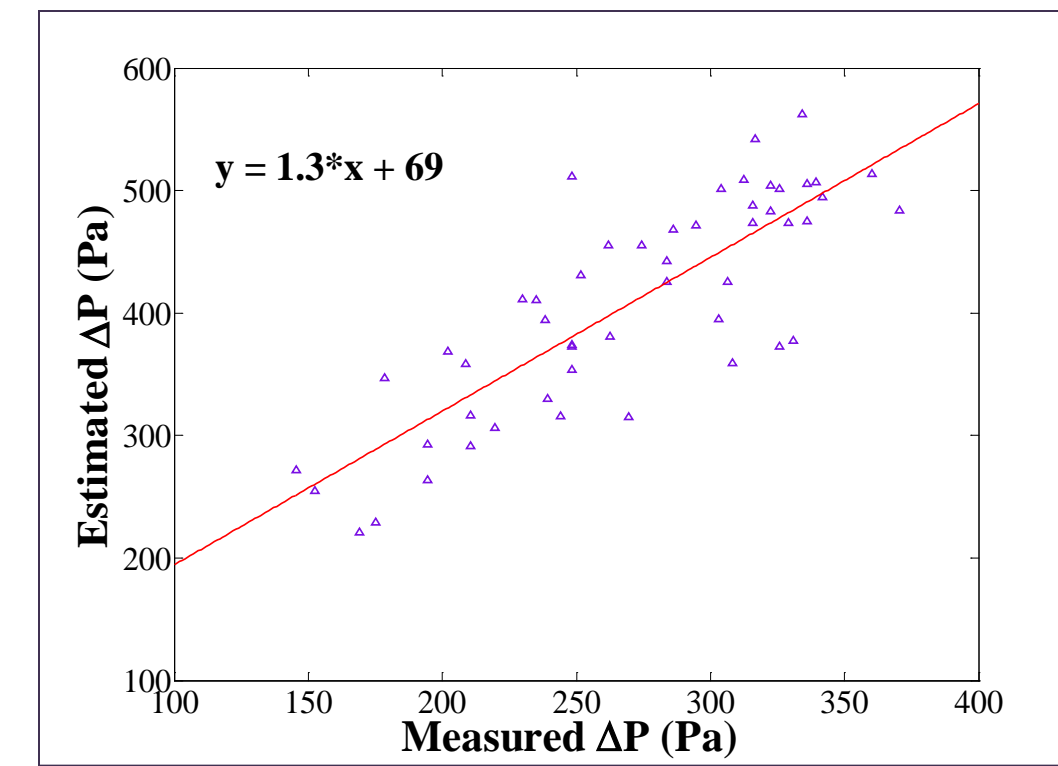
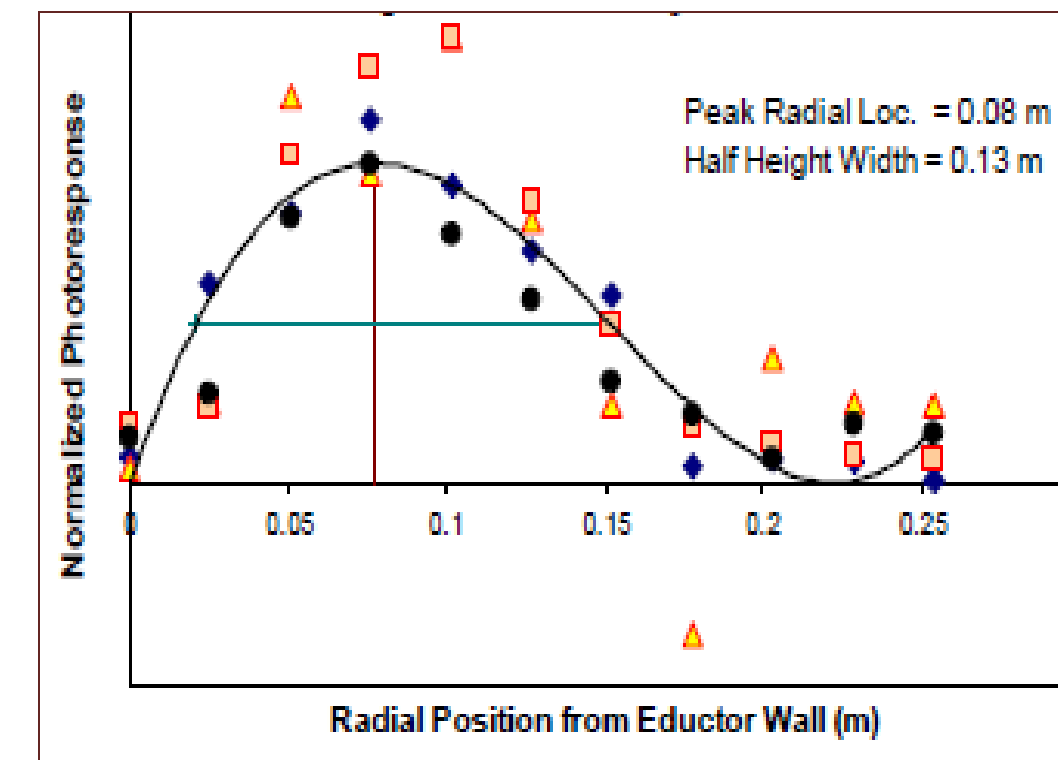
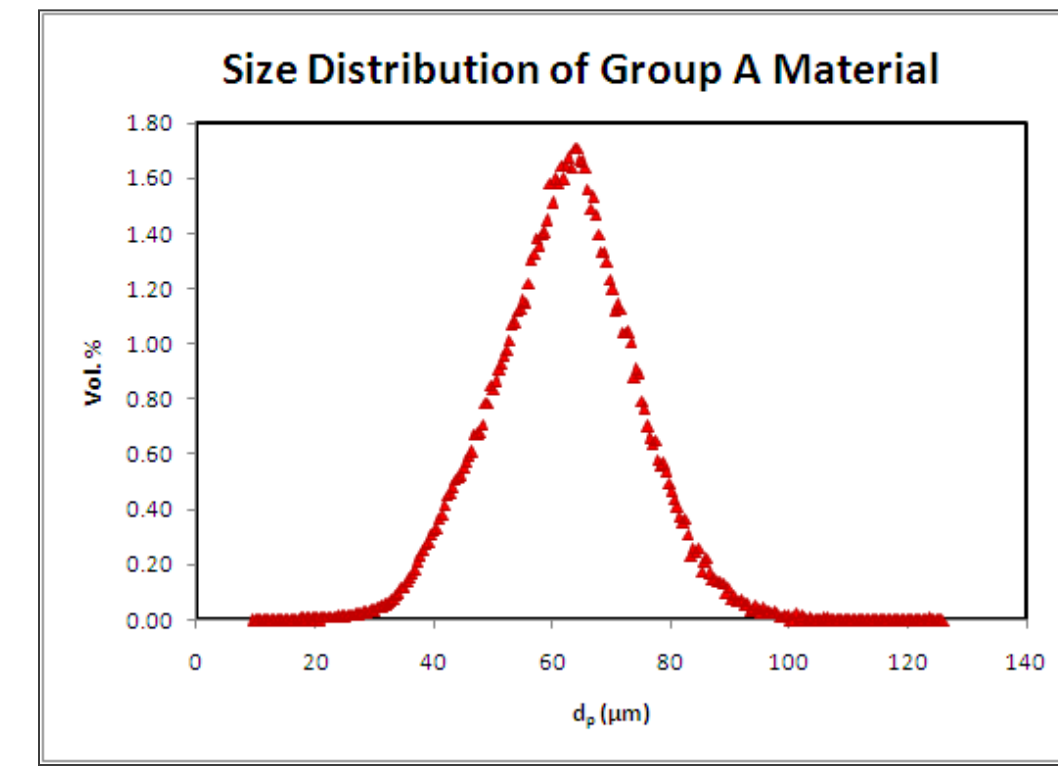


PSRI and NETL have generated third Challenge Problem data generated in NETL's circulating Fluidized Bed and PSRI's Bubbling Fluidized Bed.

The results are to be presented at the Circulating Fluidized Bed X to be held in Sun River Valley, Oregon, USA in May, 2011 (www.cfb10.org).

A description of the experimental unit used to obtain the hydrodynamic data, material parameters, and test conditions/parameters can be found at <https://mfix.netl.doe.gov>

You are invited to predict the data with your hydrodynamic model.
Measuring Our Success, Targeting Our Challenges

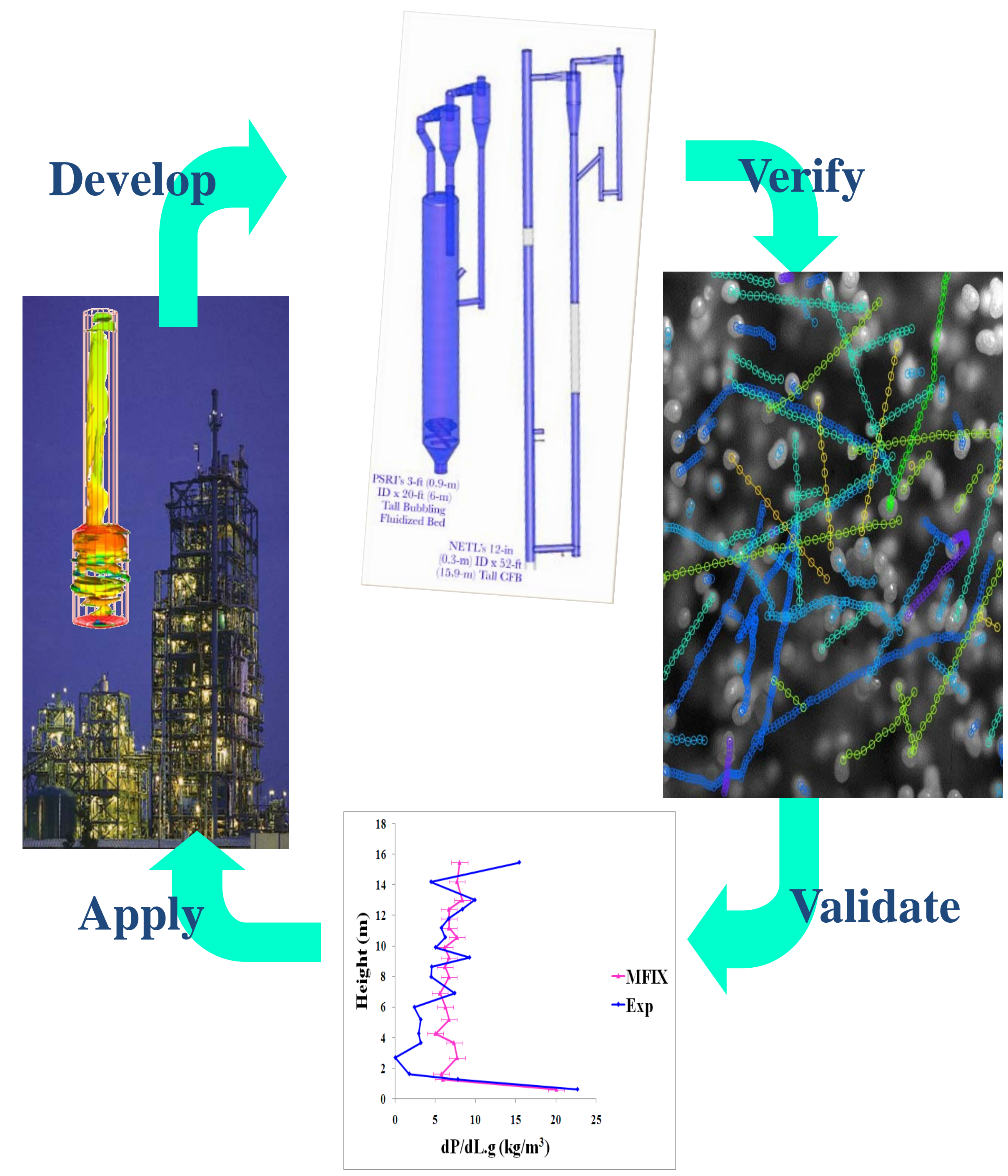
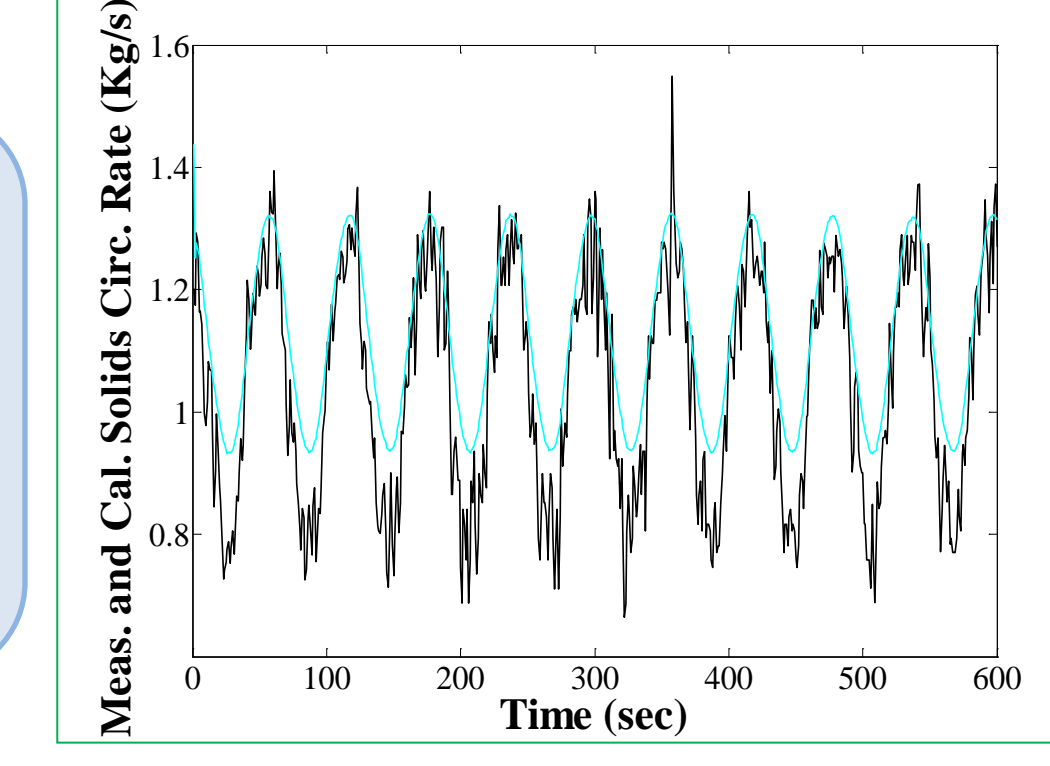
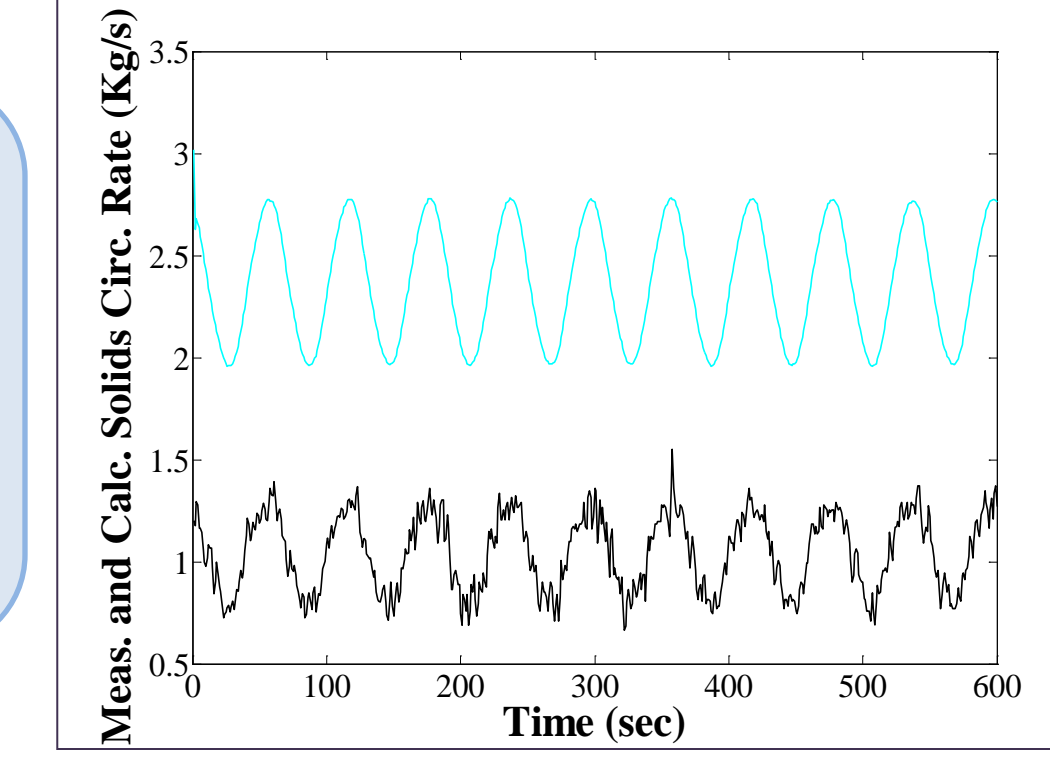
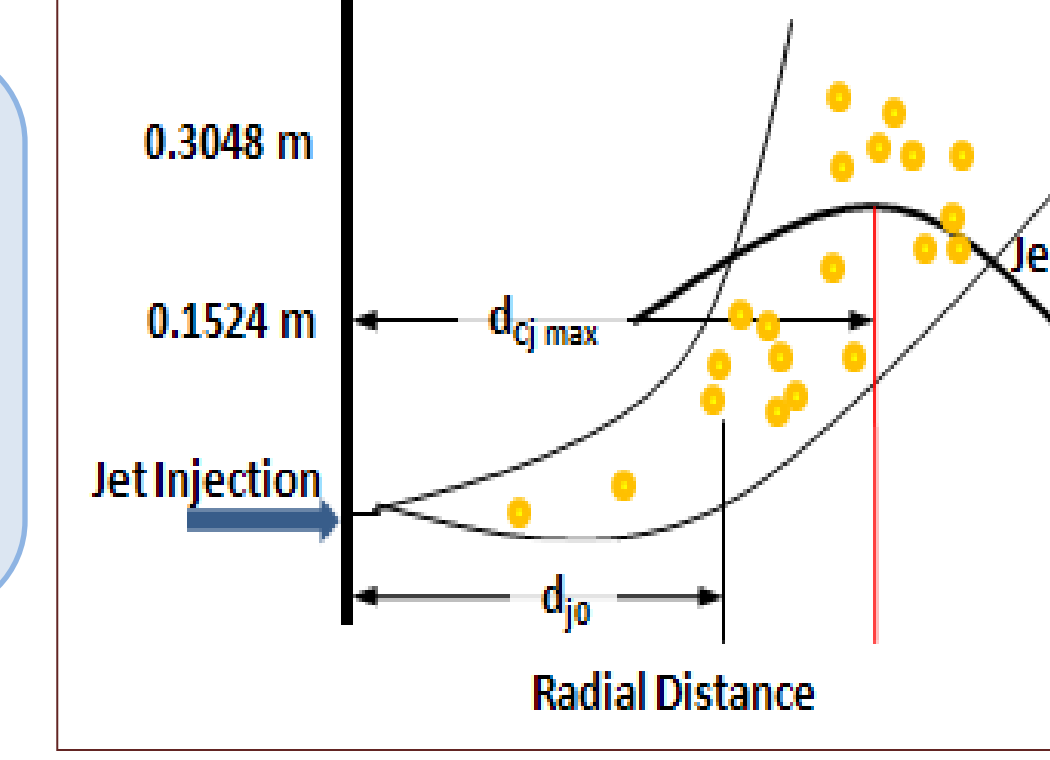
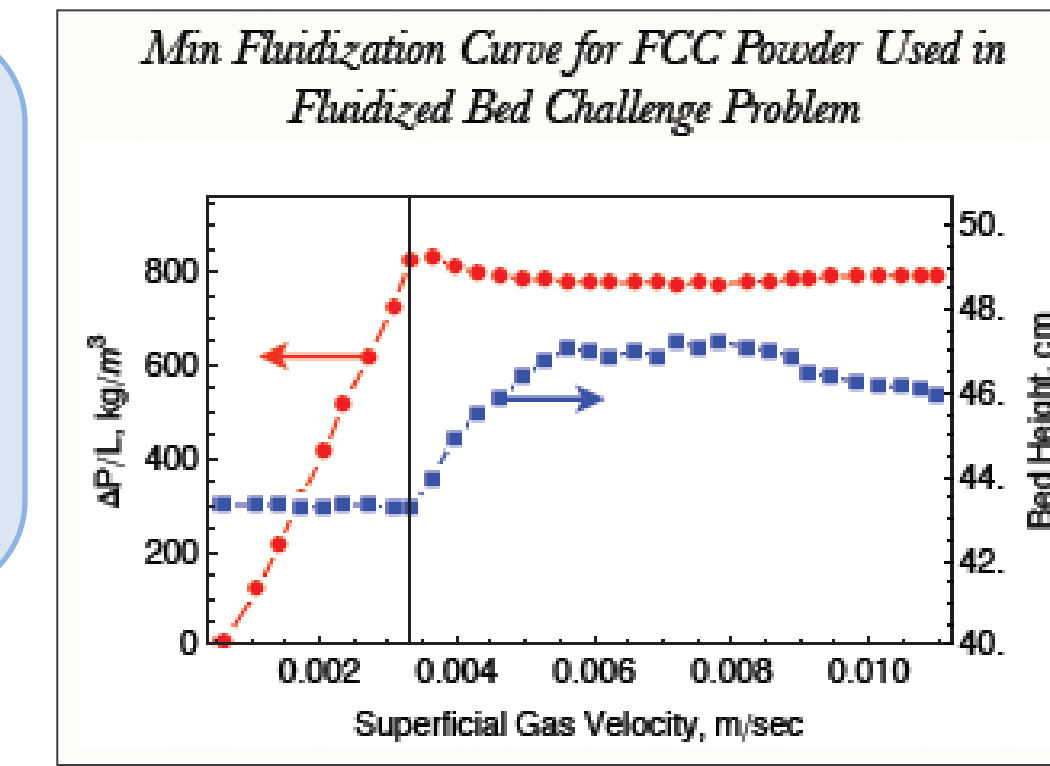


Validate Against U_{mf} , U_{mb} and Bed Density Data

Model Challenge Problems

Compare Against Results

Refine Models



Important Timeline

May 2010	Jun 2010	Jul 2010	Aug 2010	Sep 2010	Oct 2010	Nov 2010	Dec 2010	Jan 2011	Feb 2011	Mar 2011	Apr 2011	May 2011	Jun 2011	Jul 2011	
					Oct 30, 2010: First Simulation Results Due	Nov 1, 2010: Experimental Data Released				Jan 1, 2011: Second Simulation Results Due, if Needed					
										May 2, 2011: Workshop on Results at CFB 10					
															Jul 30, 2011: Publication of Results

Key Contacts
Larry Shadle lawrence.shadle@netl.doe.gov
Ray Cocco ray.cocco@psrichicago.com
Allan Issangya allan.issangya@psrichicago.com
Rupen Panday pandayr@netl.doe.gov



NATIONAL ENERGY TECHNOLOGY LABORATORY
US Department of Energy
P.O. BOX 880, MS: N05
3610 Collins Ferry Road,
Morgantown, WV-26507
T: 304 285 4647, 4286, F: 304 285 0903
www.netl.doe.gov



PSRI
PARTICULATE SOLIDS RESEARCH, INC.
4201 West 36th Street, Suite 200
Chicago, IL-60632
T: 773 523 7227, F: 773 299 1007
www.psrichicago.com